

UFS Upgrade Kit for LumenX™

1 – Install the Hardware



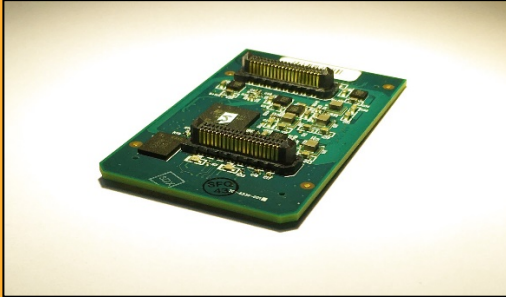
Electrical Shock Danger! Hazardous voltage is present. Use extreme caution.



Electrostatic Discharge (ESD) Hazard! ESD may damage integrated circuits. Always discharge static electricity to a common ground.

A: Insert UFS Interface Board into Programmer Socket

1. Unwrap **UFS Interface Board** from its packaging.

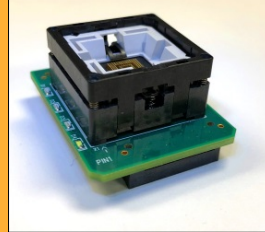


2. Rotate board orientation to align notched corners with programmer socket.
3. Gently insert UFS Interface Board into the programmer socket.

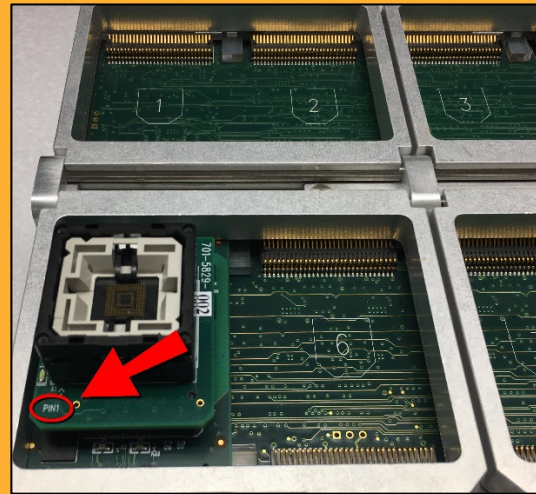


B: Insert UFS Socket Adapter into UFS Interface Board

1. Unwrap **UFS Socket Adapter** from its packaging.

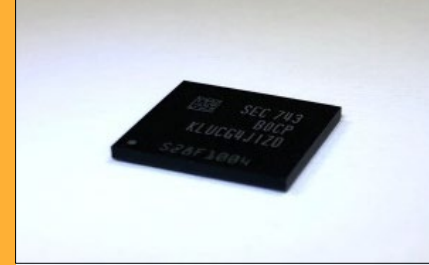


2. Rotate adapter orientation to align **PIN1** location with UFS Interface Board.
3. Gently insert UFS Socket Adapter into the UFS Interface Board.

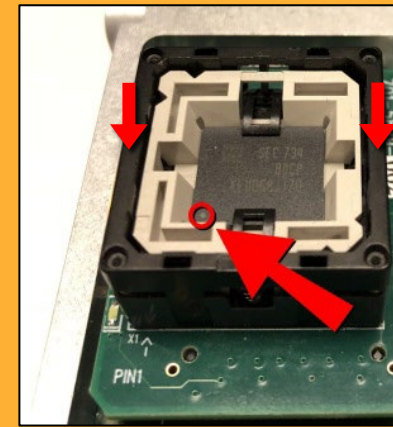


C: Insert UFS Device into UFS Socket Adapter

1. Unwrap **UFS device** from its packaging.



2. Rotate device orientation to align the dot on the device with **PIN1** location of UFS Socket Adapter.
3. Actuate the socket adapter by pressing down (to open the socket), then gently place the UFS device into the UFS Socket Adapter.



* For PSV7000, decrease the “Socket Opener Pressure Control” on the main utility panel to approximately 0.25 to 0.3 Megapascals (MPa). Else, excessive socket actuator air pressure can compromise parts longevity.

UFS Upgrade Kit for LumenX™ (continued)

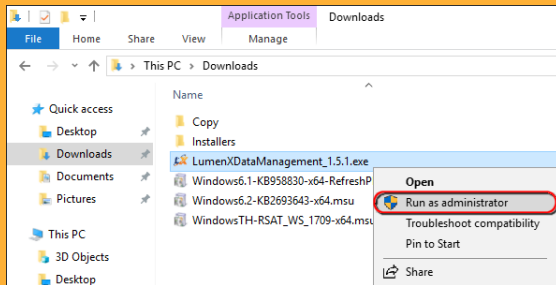
2 – Update the Software

Minimum Software Requirements - UFS support in LumenX requires:

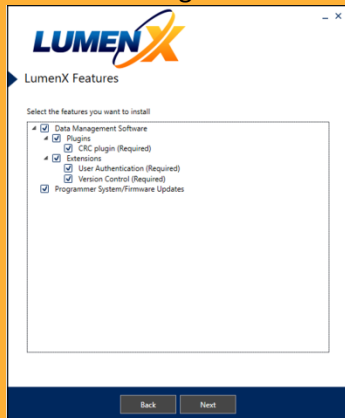
- LumenX Data Management Software (DMS) version 1.7.2+
- Automated Handler (AH700) version 3.0.0+ (for PSV7000 systems)
- CH700 version 2.9+ (for PSV5000 systems)

A: Update to LumenX DMS 1.5.1+

1. Download the latest installer for LumenX DMS (Data Management Software) from <http://www.dataio.com/Technology/LumenX>.
2. Run the downloaded installer.

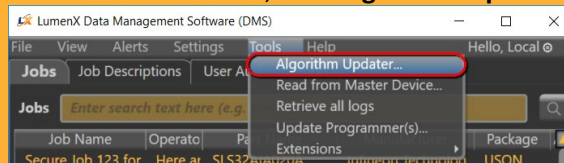


3. In the LumenX DMS Setup Wizard, click **Next** to advance through the installation.

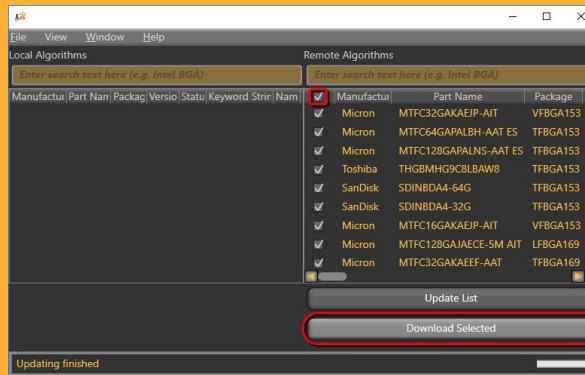


B: Run Algorithm Updater

1. Launch LumenX DMS (click **Start > Programs > Data IO > Data Management Software**).
2. From the **Tools** menu, click **Algorithm Updater**.



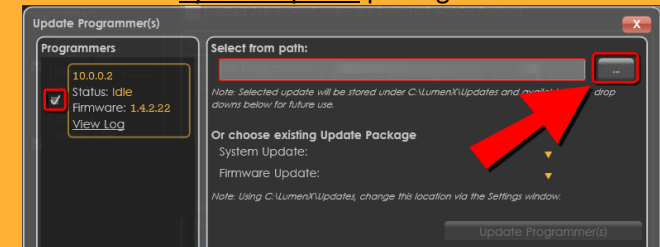
3. In the lower-right corner, click **Update List**.
4. In the right column, check the box in the upper-left corner (to select all algorithms), and then click **Download Selected**.



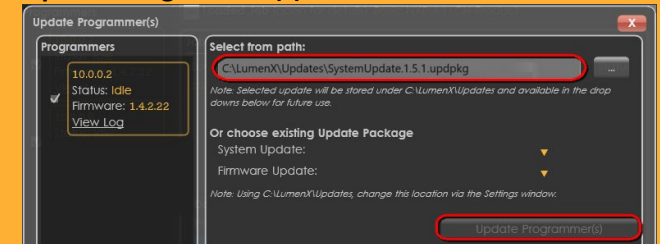
5. The **Local Algorithms** list (in the left column) populates with the updated algorithms.

C: Update Programmer Firmware

1. From the **Tools** menu, click **Update Programmer**.
2. In the left pane, check the box for the desired programmer, and then click the ellipsis (...) button to browse for a **System Update** package.



3. After loading the selected update package, click **Update Programmer(s)**.



4. Repeat these steps to update the **Firmware Update** package on the programmer.

Note that **System Update** package must be applied first (before applying any **Firmware Update** package).