

FLXHD

Entry Level Desktop
Automated Duplication



FLXHD

**Automated Desktop
e-MMC Duplication**

Simplicity

Ease of use with Data I/O's patented graphical user interface

- ✓ No language requirement
- ✓ Real time graphical display
- ✓ Instant learning

Speed

Maximize throughput with blazing fast duplication

- ✓ Zero file download
- ✓ Fast duplication for e.MMC devices
- ✓ Support for up to 40 devices
- ✓ Data I/O's perfected dual pick and place probes

FLXHD

System Specifications

Features

- 40 sockets (5 HD81 duplication engines)
- 650/pph
- Supports up to 5 Master devices
- Networked operation
- LCD touchscreen display and status lights
- Self-learning plug-and-play operation
- Pneumatic system with minimal noise (air facility required)

System Software

- Microsoft Windows 7 OS in embedded PC

Network Interface

- Network: Gigabit Ethernet

Duplication Engine

- HD81 duplication engine
- Writing and reading data at 22 MB/sec.

Physical Specifications

- **Length:** 770 mm (30.3 inches)
- **Width:** 592 mm (23.3 inches)
- **Height:** 615mm (24.2 inches)
- **Weight:** 50kg (110 lbs)

Sockets & Device Support

Socketing Technology

- Each target site uses an individual socket card. Sockets can be purchased in any quantity

Device Support

- Supports eMMC interface version 4.3, 4.4, 4.41 and 4.5
- Supports eMMC General Purpose Partition/Enhanced User Area copy and verify operation
- Duplication and Verification in Partition, Auto, File, Mirror and User Modes.
- On-the-fly checksum generation

Package Support

All JEDEC eMMC BGA packages can be supported

Media

- JEDEC and nonstandard trays up to 186 mm x 334 mm

Services

- **One year warranty**
- **Annual Programmer Support (APS):** The first year of support is included in the system purchase price and can be extended via annual support agreement renewal. The APS support program covers both hardware and system software (consumables are not included)

Requirements

Electrical/Power

- **Operating Voltage:** 100 to 240 VAC
- **Power Consumption:** <500 watts
- **Frequency Range:** 50 to 60 Hz

Air

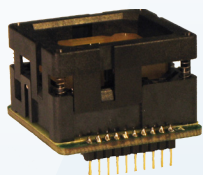
- Minimum 56 L/min @ .52 MPa or 2.0 CFM @ 75 PSI

Temperature

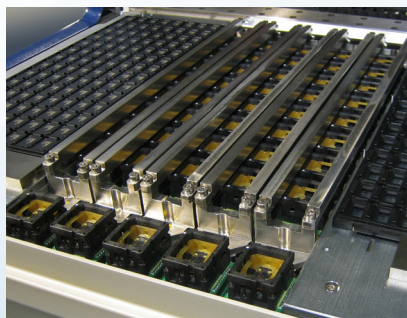
- 15°C to +35°C (59°F to + 95°F)

Humidity

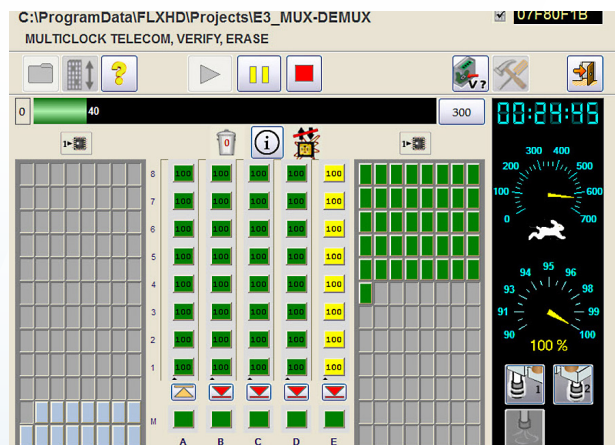
- 5-90% non-condensing



Individual Socket Card



Support for up to 40 sockets



Touch-screen interface on the FLXHD system show:

- Input tray status
- Status of each of 40 target sockets
- Status of each 5 master sockets
- Status of output tray
- Project run time remaining
- Yield gauge
- Device per hour gauge

Americas

Data I/O Corporation
Redmond, Washington, USA
Website: www.dataio.com
Email: sales@dataio.com

Europe

Data I/O GmbH
Gräfelfing, Germany
Website: www.dataio.de
email: salesgmbh@data-io.de

Asia

Data I/O Electronics (Shanghai) Co. Ltd
Shanghai, China, PRC
Website: www.dataio.com.cn
Email: ChinaSales@dataio.cn

